

LIRF/FCO
FIUMICINO

JEPPesen ROME, ITALY
26 JAN 24 (10-2D)
D-ATIS
126.125
Alt Set: hPa
Trans level: By ATC
14
RNAV 1
RNAV STAR

ELKAP 3A [ELKA3A]
GILIO 3A [GILI3A]
XIBIL 3A [XIBI3A]
RNAV ARRIVALS
(RWYS 16L/R)

Waypoint distance only for RNAV system without RNAV holding functionality.

GIPAP
RNAV
4 NM
5.5 NM
MAX 210 KT
MHA 6000

STAR	ROUTING
ELKAP 3A	ELKAP (K270-) - BIBEK - GOPOL (K250-; FL170-; FL150+) - GIXOM (K230-) - USIRU (K220-) - GIPAP (K220-; FL110-; FL090+) - RF422 (K220-) - RF423 (K220-) - RF424 (K220-) - RF426 (K210-) - RF427 (K210-) - RF428 (K210-) - SUVOK (K200).
GILIO 3A	GILIO (K250-) - BIBEK - GOPOL (FL170-; FL150+) - GIXOM (K230-) - USIRU (K220-) - GIPAP (K220-; FL110-; FL090+) - RF422 (K220-) - RF423 (K220-) - RF424 (K220-) - RF426 (K210-) - RF427 (K210-) - RF428 (K210-) - SUVOK (K200).
XIBIL 3A	XIBIL (K270-) - IPLEK - GOPOL (K250-; FL170-; FL150+) - GIXOM (K230-) - USIRU (K220-) - GIPAP (K220-; FL110-; FL090+) - RF422 (K220-) - RF423 (K220-) - RF424 (K220-) - RF426 (K210-) - RF427 (K210-) - RF428 (K210-) - SUVOK (K200).

CHANGES: ATIS.

© JEPPESEN, 2017, 2024. ALL RIGHTS RESERVED.

D-ATIS
126.125

Apt Elev
14

Alt Set: hPa
Trans level: By ATC

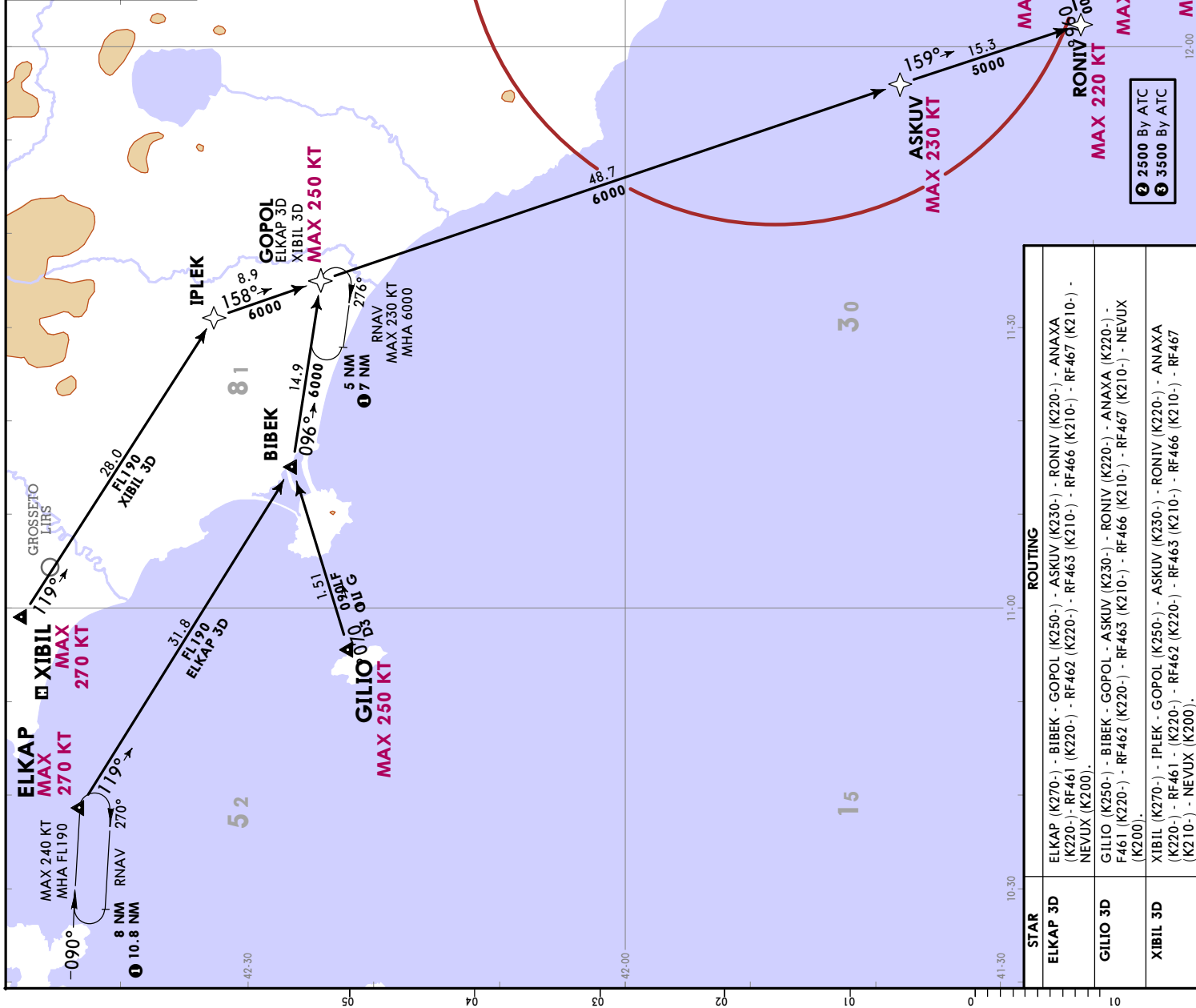
RNAV 1

RNAV 3D [ELKA3D]
GILIO 3D [GILI3D]
XIBIL 3D [XIBI3D]
RNAV ARRIVALS
(RWYS 34L/R)
BY ATC

Waypoint distance only for RNAV system without
RNAV holding functionality.

XIBIL
RNAV

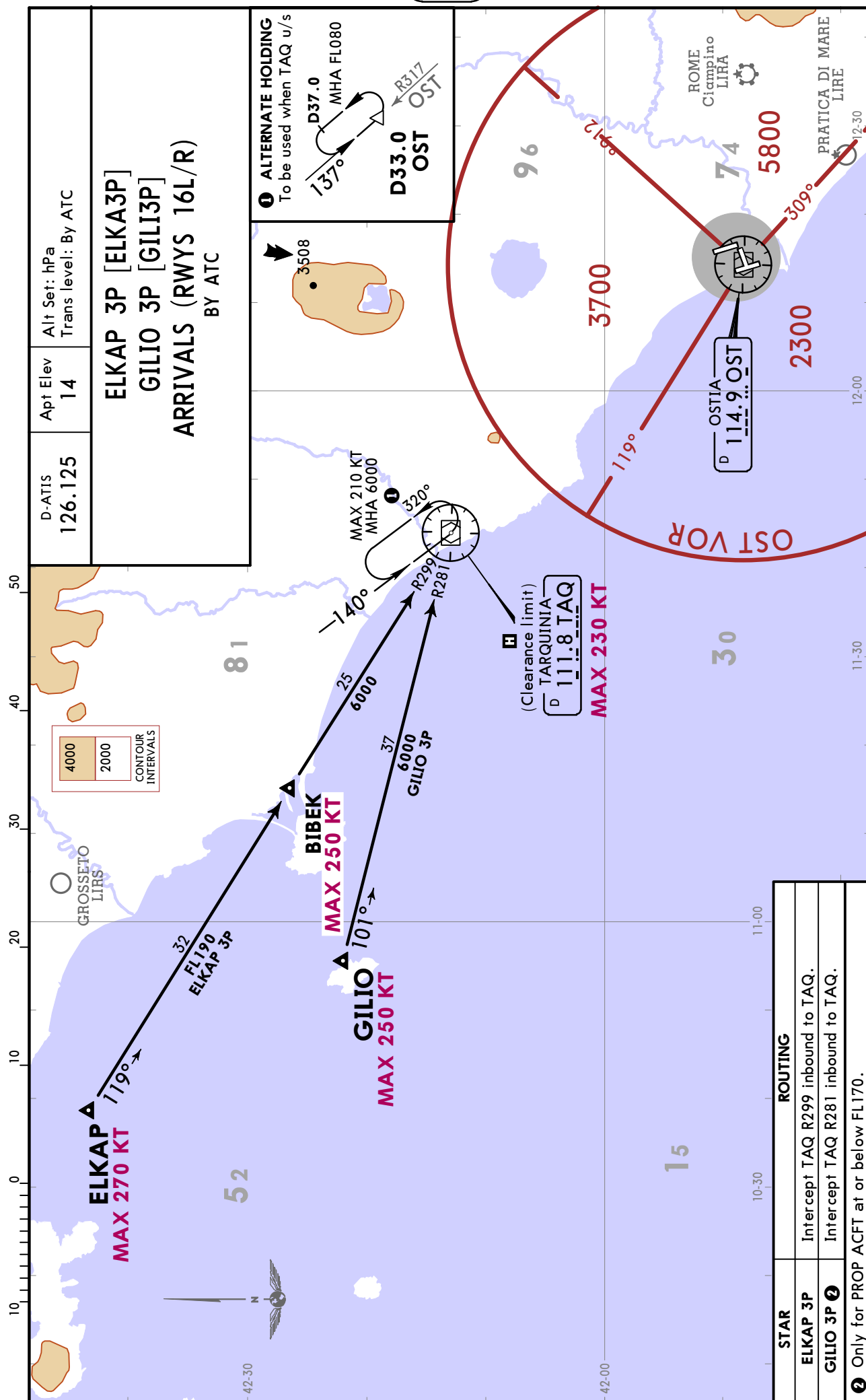
8 NM
10.8 NM
MAX 240 KT
MHA FL190
By ATC



LIRF/FCO
FIUMICINO

JEPPESSEN
26 JAN 24 (10-2V5)

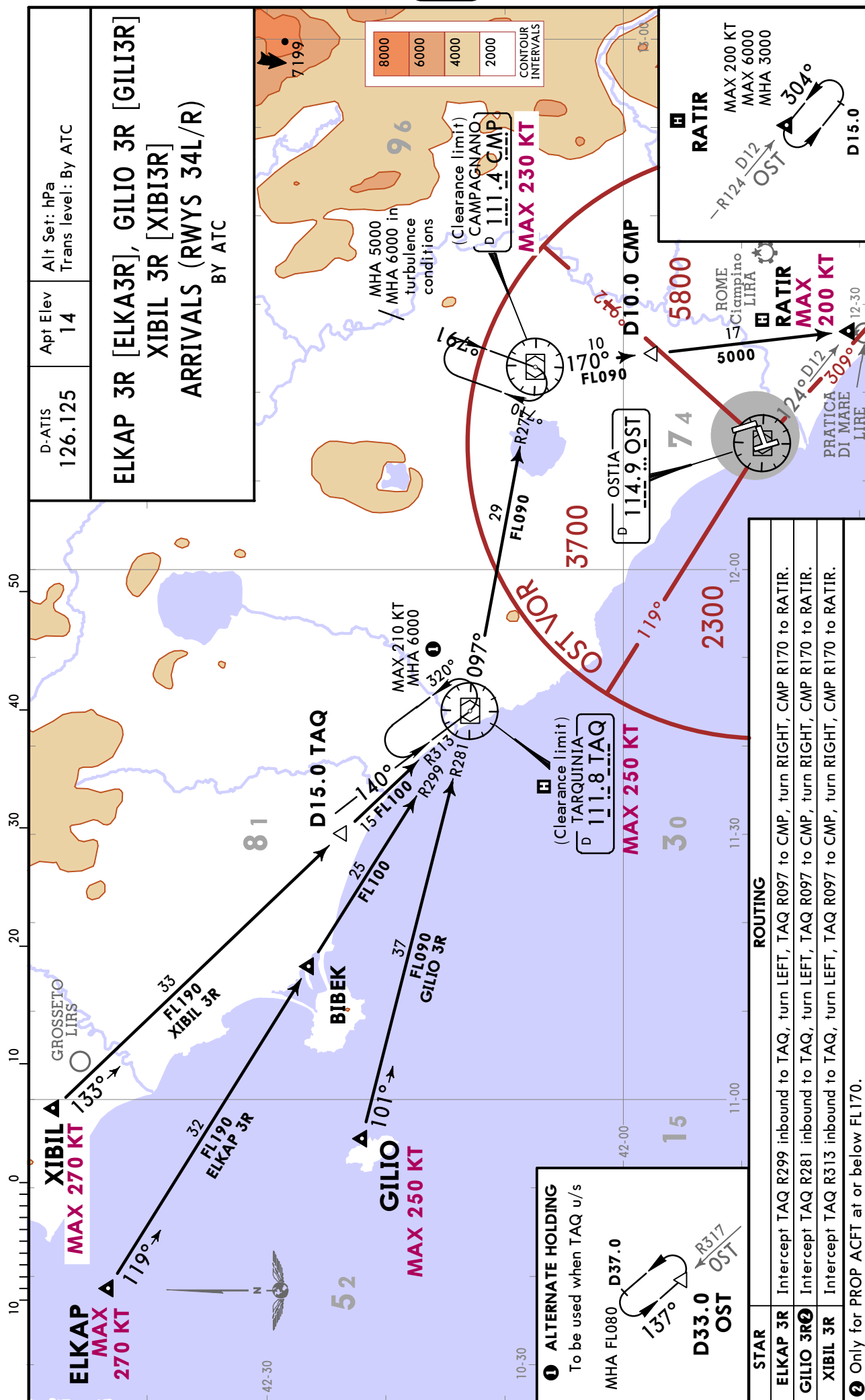
ROME, ITALY

STAR

LIRF/FCO
FIUMICINO

JEPPESEN
26 JAN 24 (10-2X3)

ROME, ITALY

STAR

LIRF/FCO
FIUMICINO

JEPPESEN
26 JAN 24 (10-2X7)

ROME, ITALY

